



Offices in Arcata, Eureka, Fort Bragg, Redding and Willits, CA; and in Coos Bay and Klamath Falls, OR

shn-engr.com

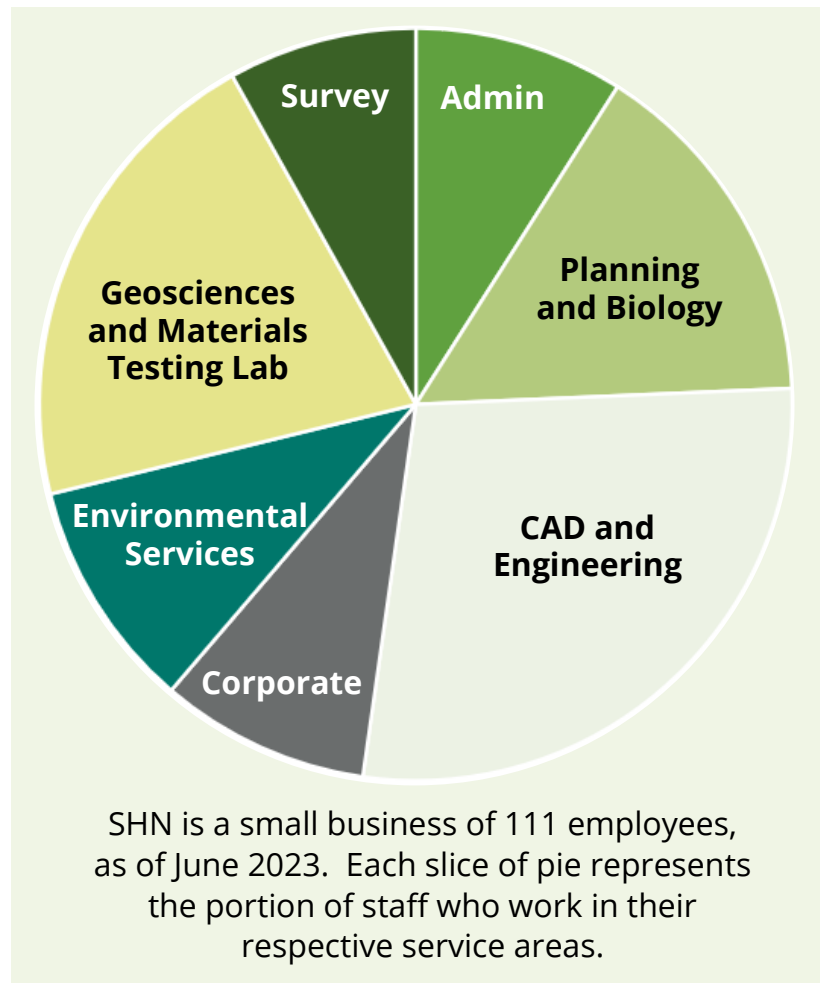
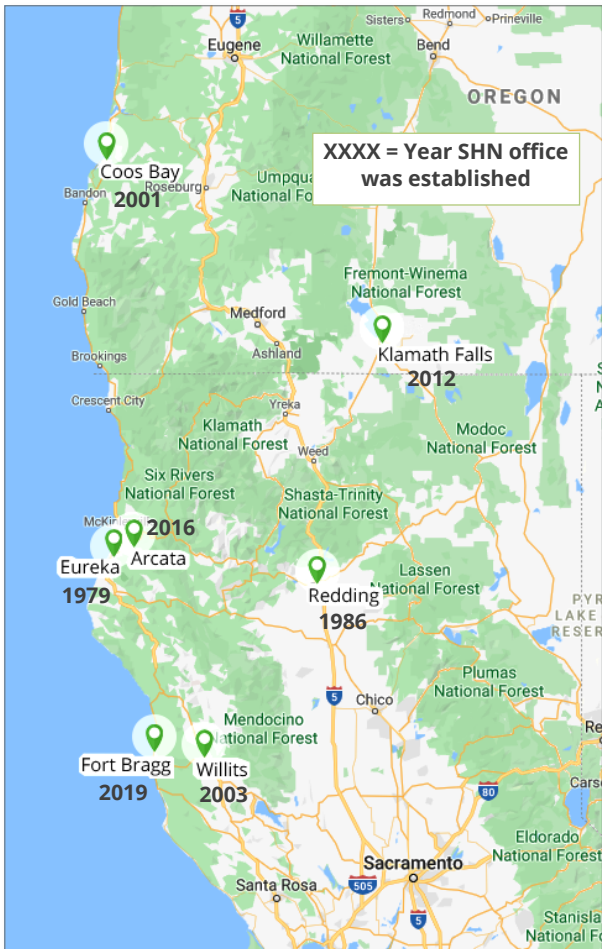
SHN is a multidisciplinary firm providing:

- Civil and environmental engineering
- Environmental investigation and remediation
- Biological/botanical surveys, wetland delineations
- Geosciences, geotechnical engineering, hydrogeology, stormwater management
- Surveying and unoccupied aerial vehicles (drones)
- Environmental and municipal planning
- Materials testing and special inspections
- Construction observation and management



SHN assisted the Wiyot Tribe with their Tuluwat Island environmental remediation and pier replacement, Humboldt Bay.

Founded in 1979, SHN began in Eureka, California, and now serves clients from seven offices in Southern Oregon and Northern California.



SHN Grows Communities

SHN is an employee-owned small business of civil and environmental engineers, geologists and geotechnical engineers, planners, surveyors, environmental scientists, and construction managers. With our range of professional services, you can work with a single firm from initial environmental permitting to final construction sign-off.

Visit our website shn-engr.com.



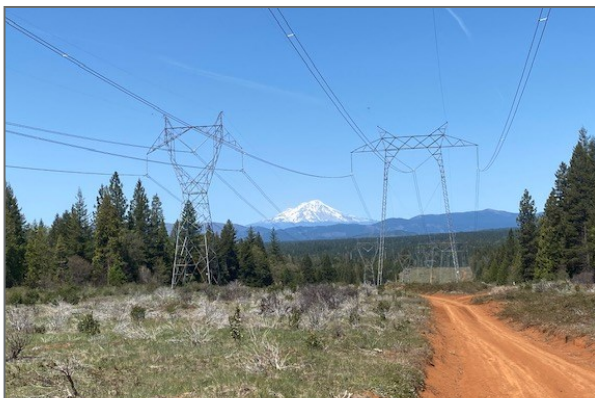
Setting an acoustic meter for bat surveys.



Community Skate Date using the new Point Arena pier and parking area. SHN provided design, planning and permitting, and construction management.



SHN geologists characterized potential alternative routes for the Last Chance Grade section of Highway 101.



SHN environmental scientists, engineers, and geologists inspect transmission lines to address the nexus between energy distribution and wildfires.



SHN materials specialists sample concrete at the Punta Gorda lighthouse.



shn-engr.com

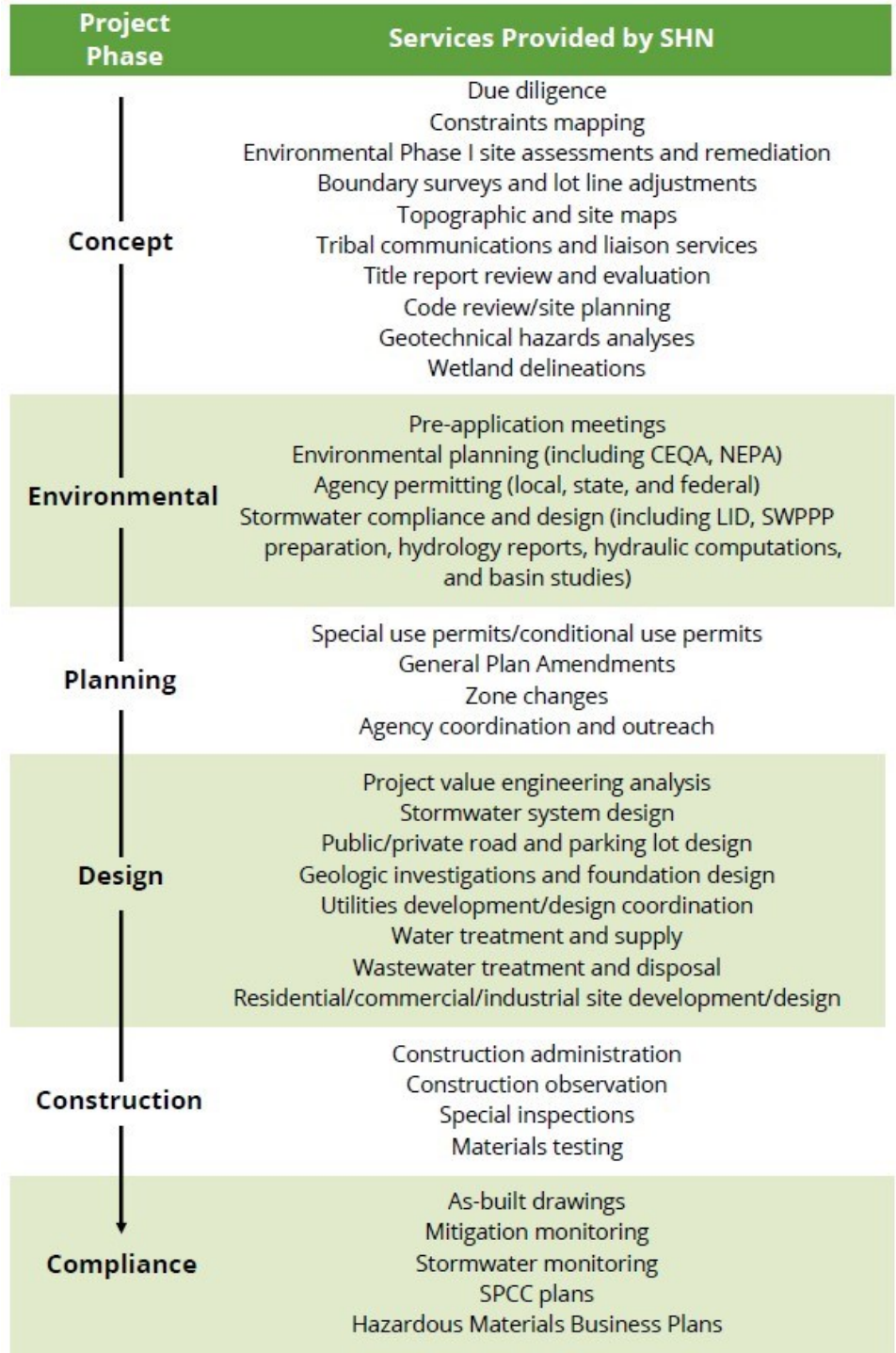
SHN's Mission: to deliver solutions that improve our communities.



For larger developments and those with specific challenges, SHN provides needed services in one firm, limiting the need for numerous subconsultants. Our staff enjoy opportunities to learn many skills and work across disciplines.



shn-engr.com



SHN is providing engineering, geosciences, planning, biology, and environmental services for redevelopment of pulp mills on the Samoa Peninsula, Humboldt Bay.

SHN's Senior Staff

Mike Foget, PE

CEO and Senior Engineer
Corporate

mfoget@shn-engr.com

Bob Brown, AICP

Planning Principal and Senior Planner
Arcata, CA

bbrown@shn-engr.com

Bruce R. Grove Jr.

Regional Principal and Senior Planner
Redding, CA

bgrove@shn-engr.com

Jason Island, PE

Regional Principal and Senior Engineer
Fort Bragg, CA

jisland@shn-engr.com

Erik Nielsen, CHG

Environmental Services Principal, Sr. Geologist
Eureka, CA

enielsen@shn-engr.com

Jared O'Barr, PE

Civil Engineering Principal and Senior Engineer
Eureka, CA

jobarr@shn-engr.com

Anders Rasmussen, PE

Regional Principal and Senior Engineer
Klamath Falls, OR

arasmussen@shn-engr.com

Jason Buck, PG

Geosciences Principal and Senior Geologist
Eureka, CA

jbuck@shn-engr.com

Chuck Steffensmeier, PE

Regional Principal and Senior Engineer
Coos Bay, OR

csteffensmeier@shn-engr.com

Sheri Woo, PE

Director of Business Development
Corporate

swoo@shn-engr.com

Brenda Sigler

Chief Financial Officer

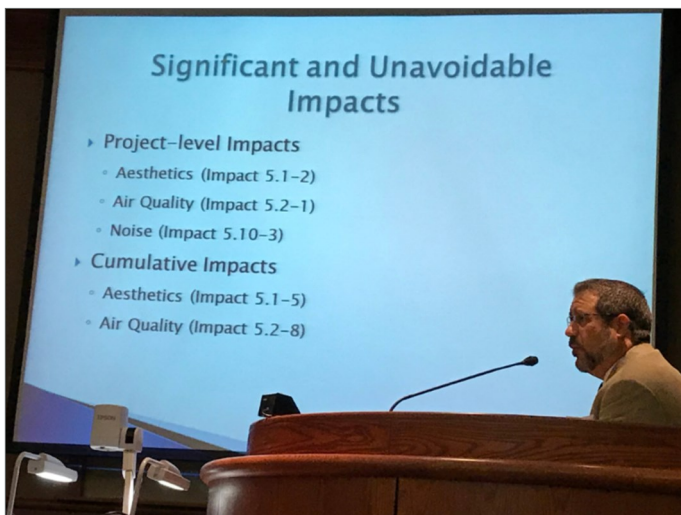
Corporate

bsigler@shn-engr.com

Dave Gonzales

Materials Testing and Special Inspections Director
Eureka, CA

dgonzales@shn-engr.com



SHN environmental planners wrote and coordinated the Dignity Health Pavilion EIR, Redding, California.



SHN engineers designed and managed construction of the City of Eureka's Waterfront Drive Extension.



SHN engineers, geologists, and materials testing specialists worked until sunset at the Punta Gorda lighthouse.



shn-engr.com